

WINE SHIELD™ by
PROTECT YOUR BRAND

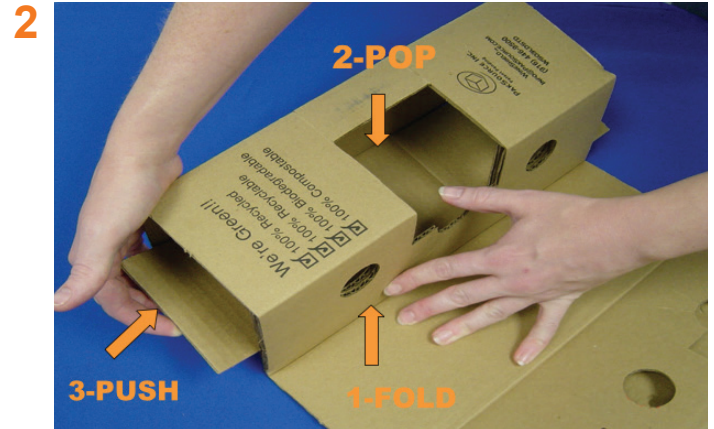


PAKSOURCE
QUALITY CUSTOM PACKAGING

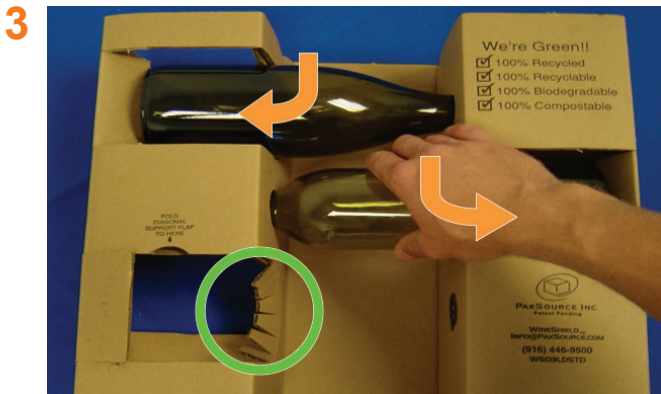
WS12BX with (4) WS03LD Set-Up Instructions 12 x 750ml WineShield™



12 x 750ml WineShield™



- 1 - Fold insert at inner score.
- 2 - Use thumb to pop open insert.
- 3 - Push 3 diagonal flaps into place.



Insert neck of bottles into small hole & push bottle down and back, pushing fingers towards bottom of bottle.



Place bottom insert in box so the bottles are perpendicular to the seam in the bottom of box.



Repeat steps 1 through 3 for other three inserts. Then place each insert in box so the bottles are opposite from the insert below it.



Pop open hand holes on box.
Note: If hand holes do not open, the inserts were not put in perpendicular to inner seam of box.