

WINE SHIELD™ by
PROTECT YOUR BRAND



PAKSOURCE
QUALITY CUSTOM PACKAGING

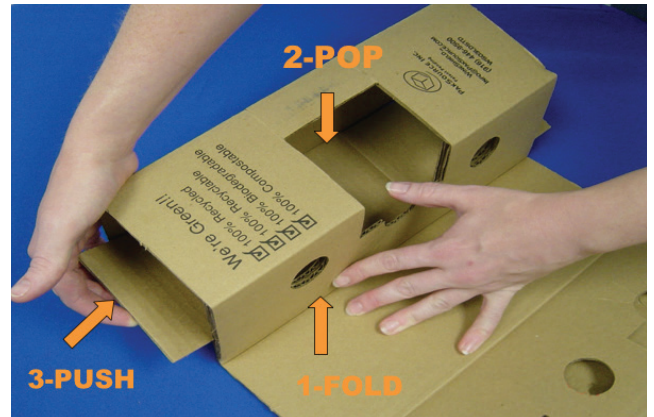
WS06BX with (2) WS03LD Set-Up Instructions 6 x 750ml WineShield™

1



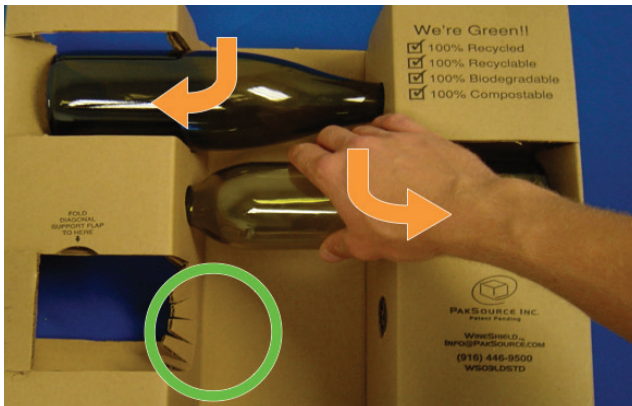
6 x 750ml WineShield™

2



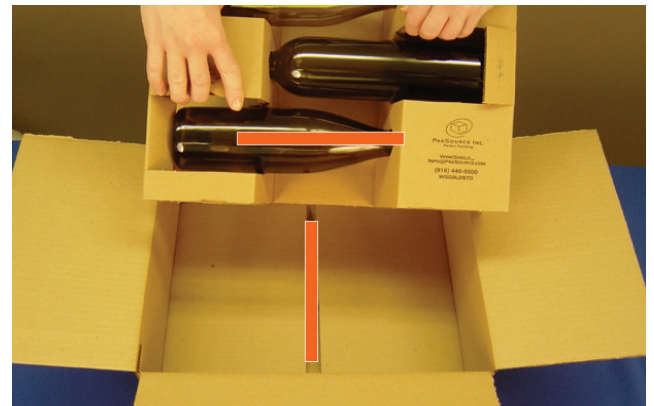
- 1 - Fold insert at inner score.
- 2 - Use thumb to pop open insert.
- 3 - Push 3 diagonal flaps into place.

3



Insert neck of bottles into small hole & push bottle down and back, pushing fingers towards bottom of bottle.

4



Then place bottom insert in box so the bottles are perpendicular to the bottom of box.

5



Repeat steps 1 through 3 for second insert. Place 2nd insert opposite way of the 1st insert so weight is evenly distributed. *No pad needed with double wall box.*