

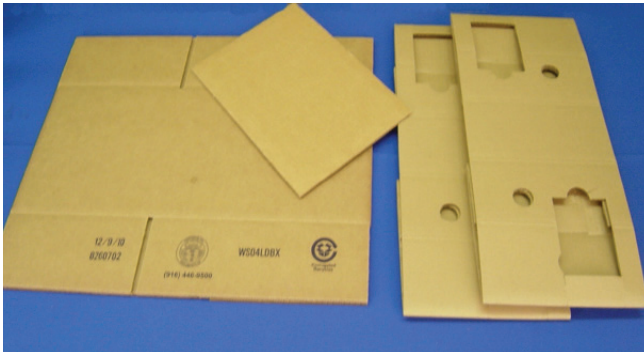
WINE SHIELD™ by
PROTECT YOUR BRAND



PAKSOURCE
QUALITY CUSTOM PACKAGING

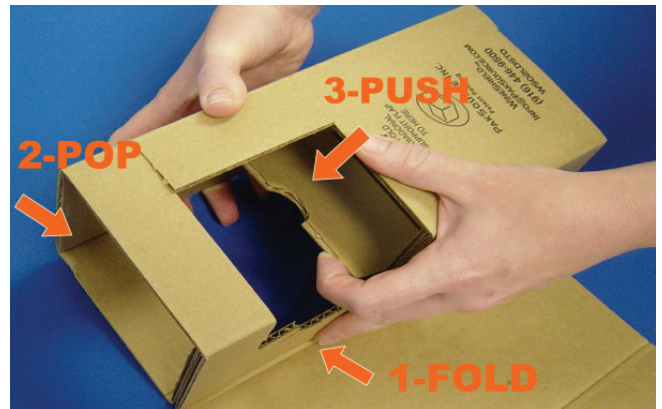
WS04LDBX with WS02LD Set-Up Instructions 4 x 750ml WineShield™

1



4 x 750ml WineShield™

2



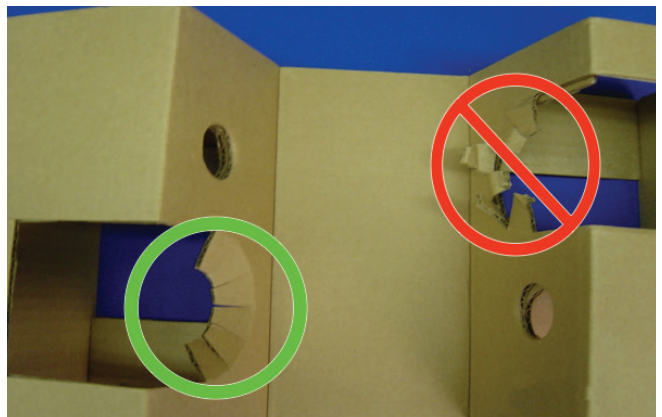
- 1 - Fold insert at inner score.
- 2 - Use thumb to pop open insert.
- 3 - Push each sides diagonal flap into place.

3



Insert neck of bottles into small hole & push bottle down and back, pushing fingers towards bottom of bottle.

4



For quality assurance make sure fingers are all pointing towards bottom of bottle.

5



Place pads on top of bottles between layers and on the top before closing box.